

BEAMER

LASER MARKING SYSTEMS



**MEET YOUR
MARKING SOLUTION!**

AMERICAN MADE quality machines with endless options
and capabilities to fit any laser marking application!

Intro / Support

Introduction:

Lasers are our passion. After nearly a decade in the making, the perfect laser marking system has evolved! Beamer laser marking systems provide the ability to mark virtually any design on all surfaces with ease, speed and precision. The versatile structure of the Beamer allows endless options to fit any form of production. A variety of standard enclosures are available, along with custom enclosures and options including automation. Right down to every weld, all systems are built with quality and pride in the USA!

Support:

2 Year Warranty



WE'RE BEHIND YOU every step of the way

Setting ourselves apart from the rest is our continued commitment after the sale. Not only are you getting a Beamer, but a support team that will be with you in aid for the growth of your business!

Problematic parts are completely covered.

On site assistance is also available.

DIRECT Connect

Rest assured knowing if any problem may arise a Beamer Technician can access and fix your machine live directly over the web. **Your Beamer will always be up and running!**



FINANCING Available!

Keep your money! Pay for your Beamer with easy and worry-free LOW monthly payments.



Capabilities

The **SOFTWARE** to mark ANYTHING!

Text: Linear RADIALS *Any Font!* Angles mirrored

Shapes:



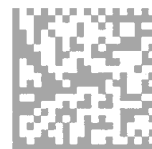
Graphics:



Sequencing / Serialization:

01AB...02ABC...03ABCD

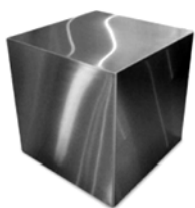
Data Codes:



Every Beamer comes complete with preloaded user-friendly software allowing easy job editing that enables you to assemble text, graphics, barcodes, sequencing, data matrix, serialization and more! With a simple point and click, you can graphically edit marking objects, precisely control laser parameters, and build automation scripts within a single interface. You will be able to define and run jobs within seconds!

The software's main screen allows users to interact easily with the graphical interface by using familiar Windows based commands. The center area, which represents the working area, can be customized with a grid of varying dimensions. This screen shows you exactly what you can expect when you execute a job. Several entities can be laid out, plus an unlimited amount of pens can be saved for specific applications and materials, eliminating the hassle of adjusting between programs!

The **POWER** to mark EVERYTHING!



Metals



Ceramics



Glass



Wood



Leathers



Plastics

Our Fiber Lasers are available in 5, 10, 20, 30 and 50 watt models and provide a wide choice of pulse durations, repetition rates and peak powers. These lasers deliver a high power 1064nm laser beam directly to the work site via a flexible metal-sheathed fiber cable. Collimated, and then typically focused to a spot size of a few microns or less, the near diffraction-limited beam can mark a variety of materials.

The patented pumping technique, known as parallel pumping, enables these fiber lasers to generate almost unlimited power and provides for pumping redundancy, enhanced reliability and an extended lifetime. They also utilize broad area multimode diode chips as pump sources, rather than diode bars with shorter lifetimes. This leads to an estimated diode lifetime of more than 100,000 hours, or more than 11 years, of continuous operation.



FULL Enclosures

XL (L-Series)

Can accommodate up to a 3' part with the side panels attached.
Easy to remove side panels allow for even larger parts!

H:66.5" x W:42" x D:40"
Opening: 24 x 38"



Standard (B-Series)

Engineered specifically to fulfill all laser marking applications, the full enclosure provides everything needed to easily mark your product quick and safe. Dual doors offer quick and precise part loading, while removable side panels allow larger parts to be marked as well. It has built-in compartments for the computer tower, easy access to components and storage areas. The computer monitor and control panel rest on a convenient swinging arm.

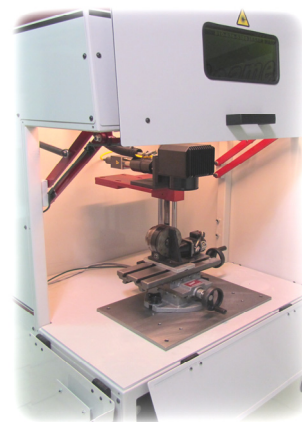
H:66.5" x W:32" x D:28"
Opening: 24 x 28"

Power Z-Axis for quick precision focus.



Smooth fast gliding dual doors to increase production and precision with safe work view window!

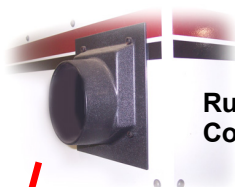
Easy to remove side panels allow for larger parts to be marked.



Industrial casters for max mobility in the work area!



Runs off standard 110 volts.
Completely air cooled.



User-friendly control panel on convenient swinging arm.



Built with high-strength powder coated steel panels and square tubing.
Not plastic!



BENCH Enclosures

Standard (S-Series)

All the same amenities as the standard Full Enclosure offered in a more compact design. It is the perfect size for a designated area like your shipping room. Dual doors offer quick and precise part loading, while removable side panels allow larger parts to be marked as well. The PC rests outside of the enclosure in an area of your choice. (tower, monitor, keyboard and mouse included)

H:32.5" x W:32" x D:28"
Opening: 24 x 28"

Available for
\$19,900



Continuous Wave (CW-Series)

The perfect entry-level laser system powered by a continuous wave laser rather than the standard fiber pulsed offered in other Beamer models. Same enclosure as S-Series, with a fixed scan head, the movement of the Z-Axis must be moved manually via a scissor lift.

H:32.5" x W:32" x D:28"
Opening: 24 x 28"

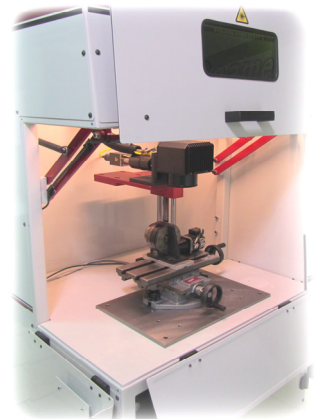
Built with high-strength powder coated steel panels and square tubing. Not plastic!



User-friendly built in control panel in favorable location.

Smooth fast gliding dual doors to increase production and precision with safe work view window!

Easy to remove side panels allow for larger parts to be marked.



The perfect size to fit in any convenient area like your shipping room. Mark your product, pack it up and ship it out fast!

CUSTOM Enclosures / Automation

Custom (C-Series)

Have a special application or placement you'd like the Beamer to occupy? We will work with you in the design of a custom enclosure that will fit your needs! Possibilities are endless with Beamer Laser Marking Systems! Significantly improve production time with the incorporation of automated options in your system. We will work closely with you in designing the perfect automated Beamer for your specifications. Mark thousands of parts with the push of a button!

YOU pick the size and features!



BELTS

HOPPERS

TABLES

WHEELS

CONVEYORS

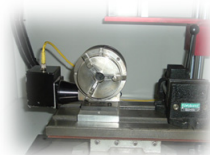


MORE Options



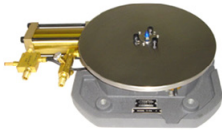
TPACK (Optional Tool Package)

Includes:
Manual XY Table
2" V Blocks
Vise



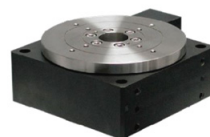
PR4 (Programmable 4" Rotary)

4" 3-Jaw Chuck to mark round parts with ease.



AP24 (Programmable 24" Air Table)

Enables automatic feeding of parts during assembly operations. Load/Unload product while machining operations continue.



HDR (Heavy Duty Rotary)

8" 3-Jaw Chuck capable of holding a 80lb. part.



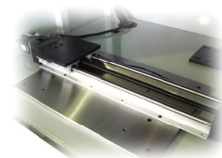
PXYT (Programmable XY Table)

Program Specific movements while your part is marking to ensure a precise mark.



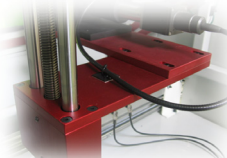
Custom Trays & Fixtures

Mark more at one time.
Customer specifies size of trays.



MXS24 (24" Manual X Slide Table)

Prevents having to move fixtured parts, instead manually adjust position of fixture trays.



PZA (Programmable Z-Axis)

Allows you to mark objects of different heights by programming the z-axis to move automatically while marking.



ATD (Automatic Door)

Eliminates the hassle of opening the door after each cycle, instead the door opens automatically or the push of a button on the control panel.

VB2 2" V-Blocks

200CFM 200CFM Ventilation

MV3 3" Mini Vice

PC110 110V Power Conditioner

SL3 Stack Light

PC220 220V Power Conditioner

PZ Power Z (Standard in all but S/CW-Series)

Scan Heads:

2-Axis Scan Head (standard)

- Rugged IP-65 Package
- 10mm Apertures
- 9.6 x 11.4 x 11.4cm
- 3.8" x 4.5" x 4.5"
- Power Range of +/- 15 to
- +/- 24VDC at 3A Max.
- XY2-100 16-Bit Digital or Analog Interface
- Engineered for Low Cost and High Performance
- Industry Standard 2 Bolt, 2 Pin Alignment



3-Axis Scan Head (available for upgrade)

- External Adjustment for Field Sizes From 100-1000mm
- Exclusive Focus & Variable Field Size Adjustment Design
- Achieves Smaller Spot Sizes and Larger Field Sizes
- Performs 3 Dimensional Process with Z-offset
- Useful for Rapid Prototyping and Laser Sintering Applications

Lenses:



Focal Lens:

Marking Area:

Working Distance:

Resolution:

FL 100mm	FL 160mm	FL 254mm
2" x 2"	4.3" x 4.3"	7" x 7"
4.13"	7.33"	12.25"
1,000 dpi	600 dpi	400 dpi

All Lenses: Speed: 400-1000 char/sec!

HAVE YOU LEFT YOUR MARK?

Mark ANY surface; **metals**, wood, plastics,
glass, leathers, **ceramics**, and more!

CALL:

810.638.5388

info@beamerlaser.com

beamerlaser.com

FAX:

810.638.7236

7162 Sheridan Rd.
Flushing, MI 48433
United States



BEAMER
LASER MARKING SYSTEMS